

Montana Children's Health Data Partnership Project Dashboard Launch

May 26, 2022



Agenda

- Welcome (5 min)
- Introduction the MCHDPP (15 min)
- Demonstration on the dashboard (10 min)
- Question and Answer Session (15 min)



History of the Project and Reason for its Inception

- 2013-2017 Montana benefited from significant investments in early childhood coalitions and Adverse Childhood Experience (ACE) Awareness across the state. The Collective Impact Framework was adopted to support community change efforts, and broad training was implemented.

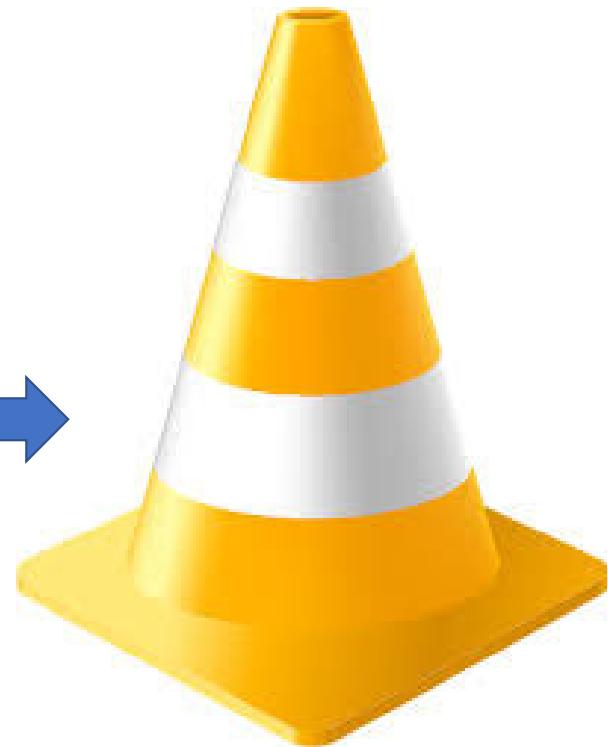





History of the Project and Reason for its Inception


- Around that same time (2014) communities began to see increased investments in local Community Health Improvement Assessments and Planning due to new attention to the field of community health assessment and improvement planning. First, the Public Health Accreditation Board required Local Health Departments interested in applying for voluntary accreditation to submit completed community health assessments (CHAs) and community health improvement plans (CHIPs).
 - Similarly, the Patient Protection and Affordable Care Act (ACA) expanded federal community benefit requirements for non-profit hospitals by requiring them to submit community health needs assessments (CHNAs) and internal plans (Ips) to the Internal Revenue Service.
-

Maternal and Child Health Measurement?





What kinds of barriers get in the way of MCH shared measurement at the local level?

- 
- 1) Difficult to access to local data
 - 2) Inconsistent to no measurement across county lines makes it difficult to evaluate improvement efforts
 - 3) Lack of professional development opportunities for coalition leaders on how to measure and report change using data

Timeline of the Montana Children's Health Data Partnership Project



**Development of Measures and Strategic Plan
2018-2019**

**Fundraising for Implementation of Strategic Plan
2019-2020**

**HOPE Module added to BRFSS
2020**

**Implementation of Strategic Plan
2020-2022**

**Data Dashboard Launch
Spring 2022**

HMHB Team:

Brie MacLaurin, HMHB

Stephanie Morton, HMHB

Consultants:

Sarah Corbally, CSCL LLC

Deb Halliday, Halliday & Associates

Jeff Linkenbach, EdD, The Montana Institute

Robert Sege, MD, PhD, Tufts University School of Medicine

Katie Loveland, Loveland Consulting, LLC

Partners:

Xanna Burg, Montana Kids COUNT

Danny Power, Montana Kids COUNT

Funders



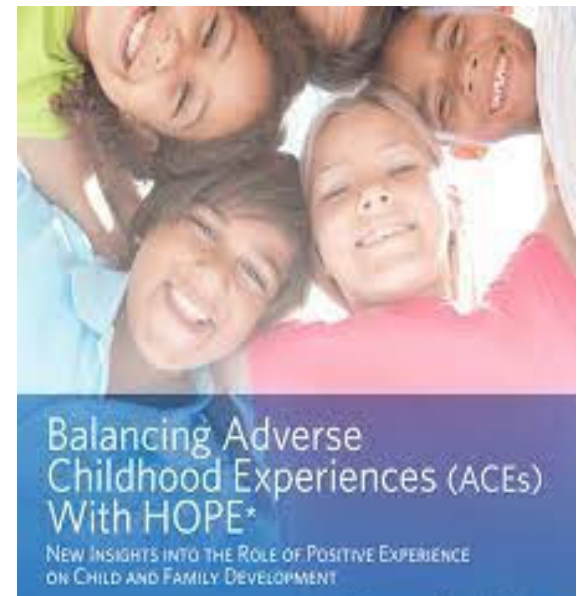
JAMA Pediatrics | Original Investigation

Positive Childhood Experiences and Adult Mental and Relational Health in a Statewide Sample Associations Across Adverse Childhood Experiences Levels

Christina Bethell, PhD, MBA, MPH; Jennifer Jones, MSW; Narangerel Gombojav, MD, PhD; Jeff Linkenbach, EdD;
Robert Sege, MD, PhD

IMPORTANCE Associations between adverse childhood experiences (ACEs) and risks for adult depression, poor mental health, and insufficient social and emotional support have been documented. Less is known about how positive childhood experiences (PCEs) co-occur with and may modulate the effect of ACEs on adult mental and relational health.

[+ Supplemental content](#)



Participating Stakeholders



BlueCross BlueShield of Montana



Office of Child & Family Ombudsman



101 North Main Street • 723-4019



United Way of Yellowstone County



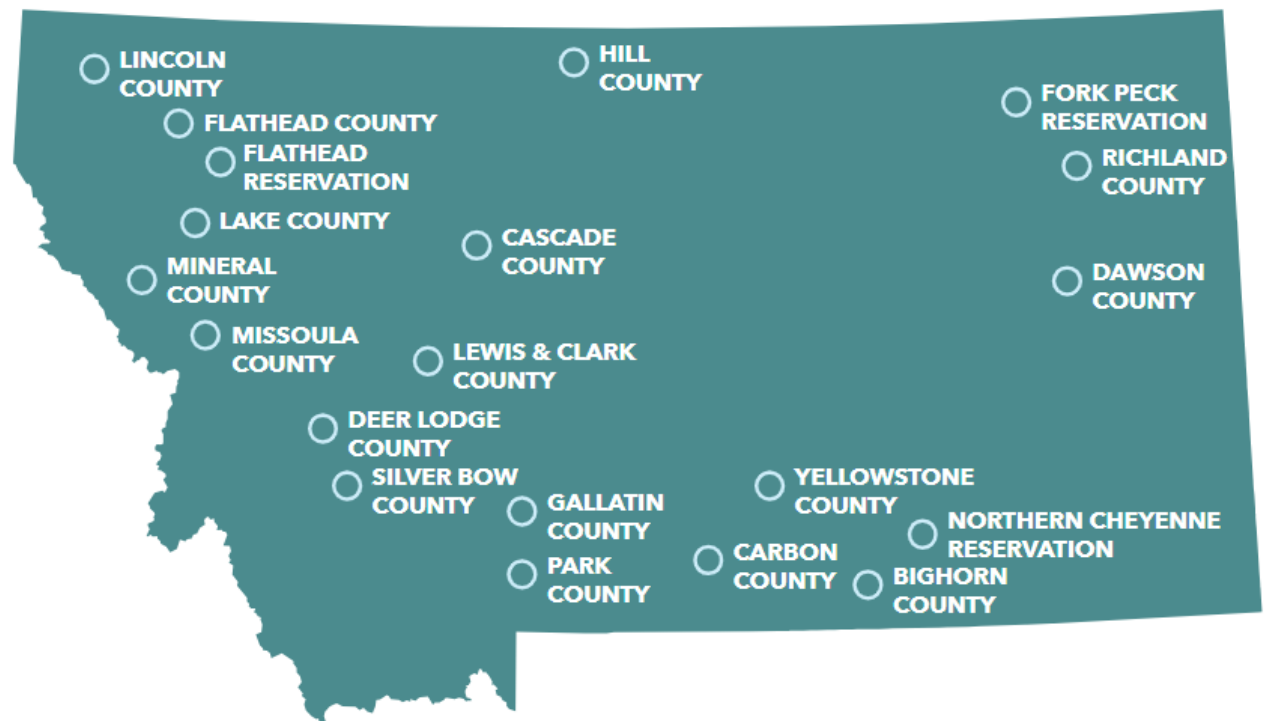
ORGANIZATIONS

- Healthy Mothers, Healthy Babies
- The Montana Institute
- The Office of the Governor of the State of Montana
- The Montana Department of Public Health and Human Services
- The Montana Children's Trust Fund
- The Montana State University Early Childhood Project
- Kelley Family Foundation
- The Montana Healthcare Foundation
- The Montana Office of Public Instruction
- BlueCross BlueShield of Montana
- Pacific Source
- Montana Hospital Association
- Montana KidsCount
- The Montana Department of Justice
- St. Vincent Healthcare
- Rocky Mountain Tribal Epidemiology Center
- The Headwaters Foundation
- The Federal Reserve Bank of Minneapolis Helena Branch
- SciGaia
- ChildWise Institute

Local Input

EARLY CHILDHOOD COALITIONS

Across the state of Montana, there are more than twenty coalitions that focus on early childhood. These groups are sometimes called Early Childhood Coalitions or Best Beginnings Community Councils. They can represent counties, reservations, or cities and may be coordinated out of public health departments, tribal governments, or non-profit organizations. These groups are a coalition of people working to improve the health and wellbeing of kids and families in their area and beyond.



Our Criteria

Criteria were developed and agreed upon by the stakeholder group through an iterative process.

IMPACT ON CHILDREN

Aligns with purpose of the project; outcome-focused; includes both risk and protective (HOPE) measures; includes domains of family well-being

ACCESSIBLE

Easy to collect; already being collected; able to monitor

ACTIONABLE

Relevant to urban and rural communities; community coalitions can affect

HIGH-QUALITY

Valid sources; can be used to establish baseline; replicable (can follow over time)

CULTURALLY RELEVANT

Definitions and measures are relevant to all populations, particularly American Indian; allow for disaggregation by race where possible

The Measures



Percentage of women who initiated prenatal care in their first trimester



Quality well-child check rates



Percentage of low birth weight babies



Percentage of women who have a post-partum visit within 60 days



Percentage of 2-year-olds who receive immunizations on-time



Number of children receiving evidence-based home visiting services



Number of children who attend quality child care and/or early education



3rd grade reading proficiency levels



Foster care rates for children ages 0 to 5



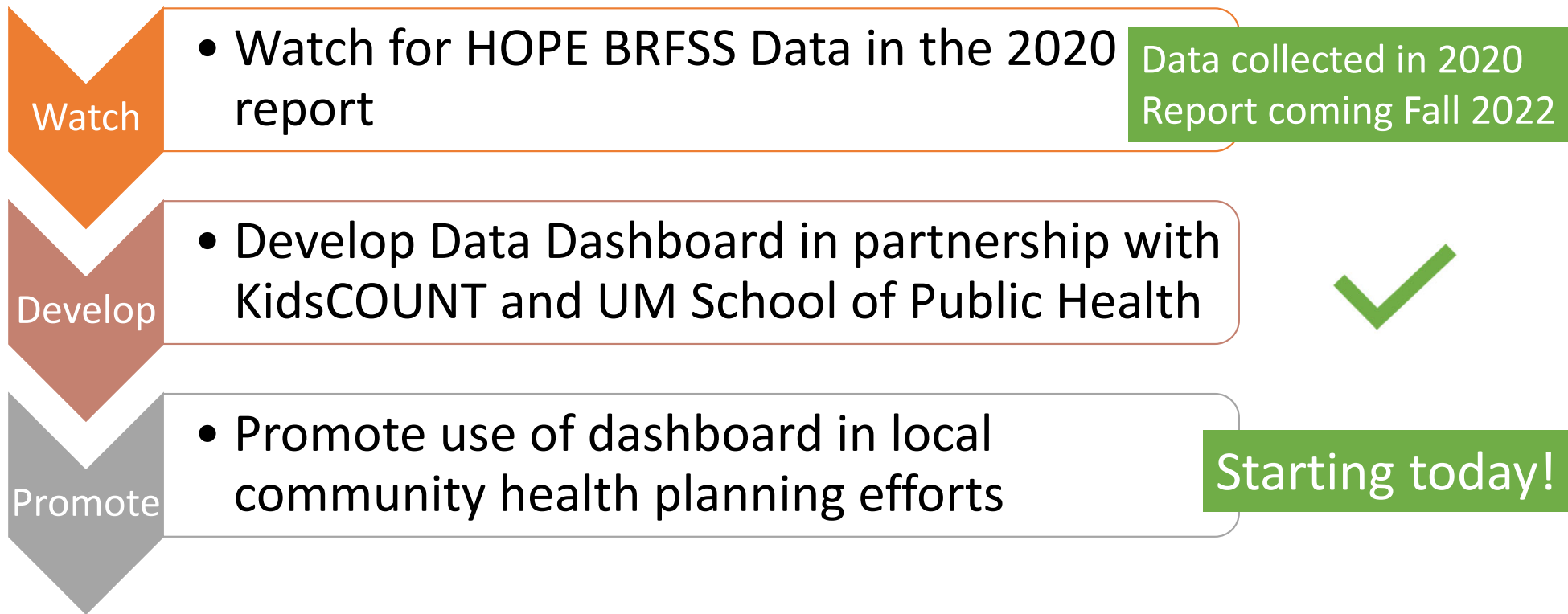
WIC rates for children ages 0 to 5

THE MONTANA CHILDREN'S HEALTH DATA PARTNERSHIP PROJECT Summary & Strategic Plan Spring 2019



Link to full report
[HERE](#)

Next Steps





HMHB-MT

Thank you!

Stephanie Morton, MSW
Program Manager
Stephanie@hmhb-mt.org

(406)449-8611 o

(406)370-2504 c

Brie MacLaurin, RN
Executive Director
Brie@hmhb-mt.org

(406)449-8611

Find many of the resources and more located on our website at:
www.hmhb-mt.org